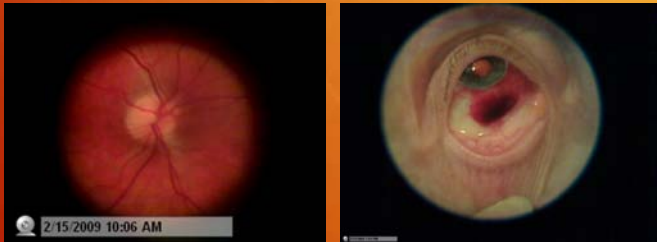


Features:

Imagine taking photos of a suspicious lid nevus and a glaucomatous optic nerve head instantly, with the same instrument, without any complicated adjustments or equipment switching! The camera can document everything you see as you examine the patient. Simply set your focus, distance, and illumination, and with the user friendly software press the snapshot button to take photos or video!



- Impressive 8 megapixel images (software enhanced)
- Carl Zeiss optics
- Autofocus or manual focus lens
- HD video recording for demonstrations
- Video feature captures up to 30 frames per second
- Portable- can be used anywhere with a laptop or stationary computer
- Retinal photos are a billable procedure (cpt code 92250)
- Anterior Seg photos are a billable procedure (cpt code 92285)
- Impresses and educates patients
- Attachment is easy to use- You can even self-examine your own eye inside and out!
- Takes advantage of proven Welch Allyn optics
- Attachment does not permanently alter your existing Welch Allyn PanOptic - attachment is easily to take on & off as needed
- Print on photo paper for chart, or save to your computer
- Can be used for telemedicine
- Photos can be time and date stamped
- Excellent for OD's, MD's, VOSH or mission trips, nursing home visits, professors, students, and residents!
- Includes 1 year, one-time replacement warranty



The PanOptic
Ophthalmoscope
Anterior Segment &
Retinal Camera
Attachment™ is an
easy to use, portable,
inexpensive, and
billable instrument
that snaps onto your
existing Welch Allyn
PanOptic
ophthalmoscope.

System Requirements for Camera and Software:

Windows XP
Pentium 4, 1.4GHz or AMD Athlon 1GHz processor
(Pentium 4, 2.4GHz recommended)
128 MB RAM (256 MB recommended)
200 MB Hard drive, plus storage room for photos or video
CD-ROM drive
16-bit color display adapter
OS compatible sound card and speakers
1.1 or 2.0 USB port

Windows Vista
Pentium 4 2.4 GHz (2.8 GHz recommended)
512 MB RAM (1GB recommended, **cannot be 4GB or higher**)
200 MB hard drive
CD-ROM drive
16 bit color display adapter
OS compatible sound card and speakers
1.1 or 2.0 USB port

*Note that orders will take approximately 3-4 weeks to process.
Each camera attachment comes with a 1 year, one-time replacement warranty.



provizionusa@yahoo.com

(920) 493-0104

Visit us on the web at www.provizionusa.com

Patent Pending

The PanOptic Anterior Segment & Retinal Camera Attachment™



A portable, digital retinal and anterior segment camera at an affordable price!

